



REGIONAL SPECIALISED METEOROLOGICAL CENTRE -TROPICAL CYCLONES, NEW DELHI TROPICAL WEATHER OUTLOOK

DEMS-RSMC TROPICAL CYCLONES NEW DELHI DATED 01.07.2025

TROPICAL WEATHER OUTLOOK FOR THE NORTH INDIAN OCEAN (THE BAY OF BENGAL AND THE ARABIAN SEA) VALID FOR THE NEXT 168 HOURS ISSUED AT 0600 UTC OF 01.07.2025 BASED ON 0300 UTC OF 01.07.2025.

LAND:

Yesterday's low-pressure area over Gangetic West Bengal & neighbourhood moved west – northwestwards and lay over Jharkhand & neighbourhood at 0300 UTC of today, the 01st July 2025. The associated cyclonic circulation extended upto 5.8 km above mean sea level. It is likely to move slowly west-northwestwards across Jharkhand during next 24 hours.

BAY OF BENGAL:

Scattered to broken low and medium clouds with embedded intense to very intense convection lay over Bay of Bengal and north Andaman Sea. Scattered low and medium clouds with embedded moderate to intense convection lay over south Andaman Sea.

***PROBABILITY OF CYCLOGENESIS (FORMATION OF DEPRESSION) DURING NEXT 168 HRS:**

24 HOURS	24-48 HOURS	48-72 HOURS	72-96 HOURS	96-120 HOURS	120-144 HOURS	144-168 HOURS
NIL	NIL	NIL	NIL	NIL	NIL	NIL

***NOTE: EVERY 24HR FORECAST IS VALID UPTO 0300 UTC (0830 IST) OF NEXT DAY**

ARABIAN SEA:

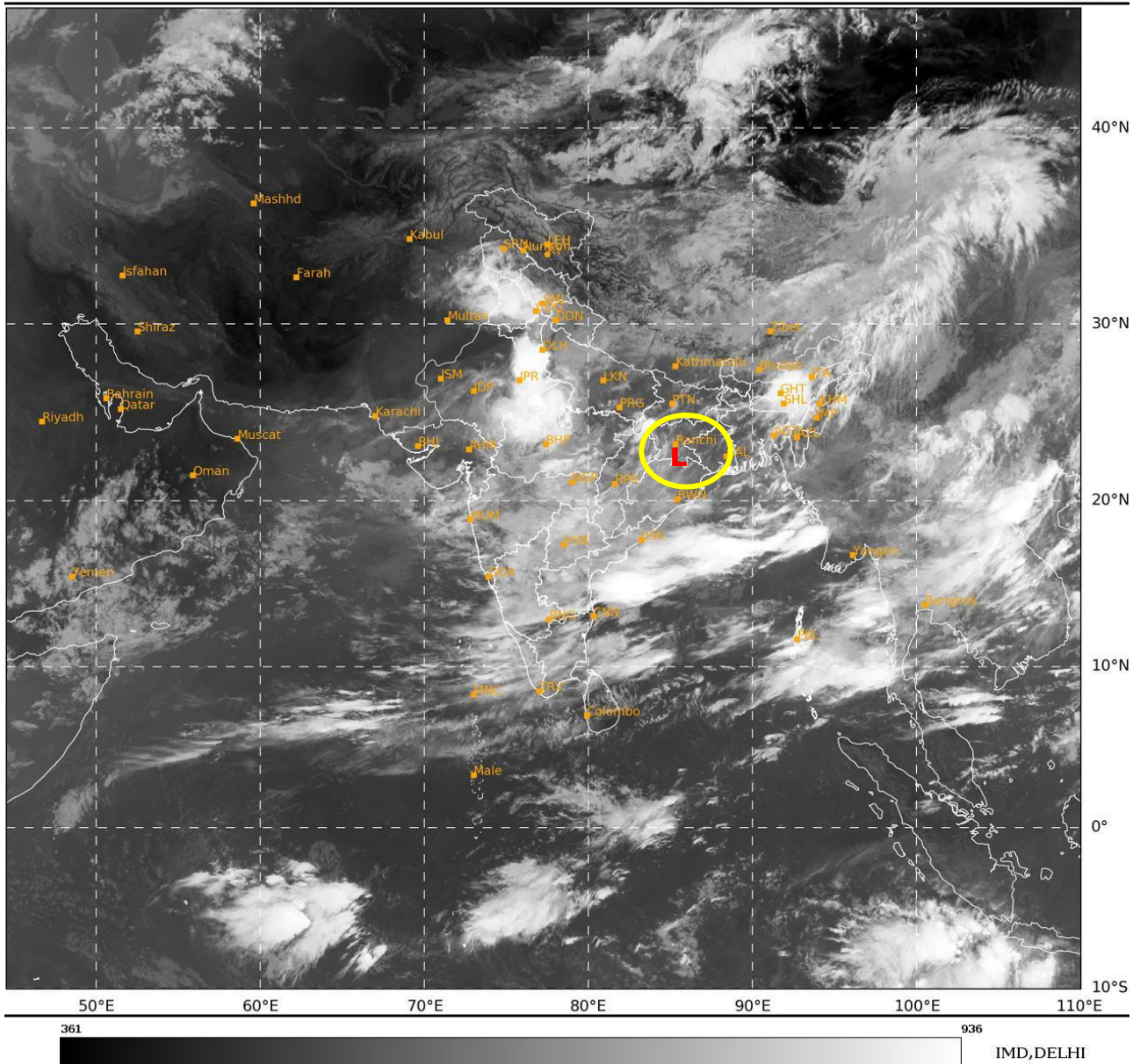
Scattered low and medium clouds with embedded moderate to intense convection lay over southwest & southeast Arabian Sea off Karnataka – Kerala coasts and Lakshadweep Islands area. Scattered low and medium clouds with embedded weak to moderate convection lay over the rest of the Arabian Sea.

***PROBABILITY OF CYCLOGENESIS (FORMATION OF DEPRESSION) DURING NEXT 168 HRS:**

24 HOURS	24-48 HOURS	48-72 HOURS	72-96 HOURS	96-120 HOURS	120-144 HOURS	144-168 HOURS
NIL	NIL	NIL	NIL	NIL	NIL	NIL

***NOTE: EVERY 24HR FORECAST IS VALID UPTO 0300 UTC (0830 IST) OF NEXT DAY**

REMARKS: NIL



L: LOW PRESSURE AREA